



CNG-1 β Polyclonal Antibody

| | |
|---------------------------|---|
| Catalog No | YP-Ab-16408 |
| Isotype | IgG |
| Reactivity | Human;Mouse;Rat |
| Applications | WB;ELISA |
| Gene Name | CNGB1 |
| Protein Name | Cyclic nucleotide-gated cation channel beta-1 |
| Immunogen | The antiserum was produced against synthesized peptide derived from human CNGB1. AA range:571-620 |
| Specificity | CNG-1 β Polyclonal Antibody detects endogenous levels of CNG-1 β protein. |
| Formulation | Liquid in PBS containing 50% glycerol, 0.5% BSA and 0.02% sodium azide. |
| Source | Polyclonal, Rabbit,IgG |
| Purification | The antibody was affinity-purified from rabbit antiserum by affinity-chromatography using epitope-specific immunogen. |
| Dilution | Western Blot: 1/500 - 1/2000. ELISA: 1/10000. Not yet tested in other applications. |
| Concentration | 1 mg/ml |
| Purity | $\geq 90\%$ |
| Storage Stability | -20°C/1 year |
| Synonyms | CNGB1; CNCG2; CNCG3L; CNCG4; RCNC2; Cyclic nucleotide-gated cation channel beta-1; Cyclic nucleotide-gated cation channel 4; CNG channel 4; CNG-4; CNG4; Cyclic nucleotide-gated cation channel gamma; Cyclic nucleotide-gated cation channel mo |
| Observed Band | 102kD |
| Cell Pathway | Membrane; Multi-pass membrane protein. |
| Tissue Specificity | Retina, |
| Function | disease:Defects in CNGB1 are the cause of retinitis pigmentosa type 25 (RP25) [MIM:268000]. RP leads to degeneration of retinal photoreceptor cells. Patients typically have night vision blindness and loss of midperipheral visual field. As their condition progresses, they lose their far peripheral visual field and eventually central vision as well.,similarity:Belongs to the cyclic nucleotide-gated cation channel (TC 1.A.1.5) family.,similarity:Contains 1 cyclic nucleotide-binding domain.,subunit:Heterooligomeric complex with CNGA1., |
| Background | In humans, the rod photoreceptor cGMP-gated cation channel helps regulate ion flow into the rod photoreceptor outer segment in response to light-induced alteration of the levels of intracellular cGMP. This channel consists of two |



subunits, alpha and beta, with the protein encoded by this gene representing the beta subunit. Defects in this gene are a cause of cause of retinitis pigmentosa type 45. Three transcript variants encoding different isoforms have been found for this gene. [provided by RefSeq, Oct 2013],

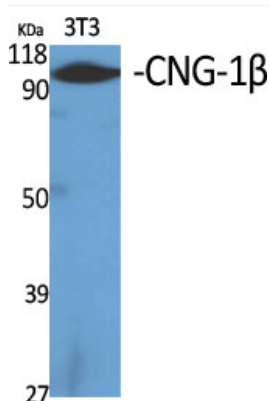
matters needing attention

Avoid repeated freezing and thawing!

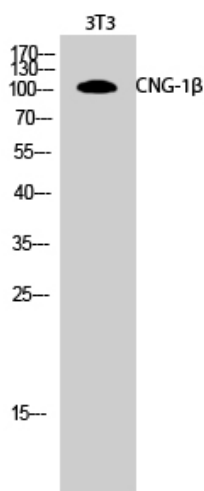
Usage suggestions

This product can be used in immunological reaction related experiments. For more information, please consult technical personnel.

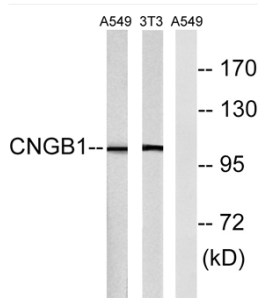
Products Images



Western Blot analysis of various cells using CNG-1 β Polyclonal Antibody



Western Blot analysis of 3T3 cells using CNG-1 β Polyclonal Antibody



Western blot analysis of lysates from NIH/3T3 and A549 cells, using CNGB1 Antibody. The lane on the right is blocked with the synthesized peptide.